

ARGYLE PINK™

DIAMONDS

GEM IDENTIFICATION AND AUTHENTICITY DOCUMENT

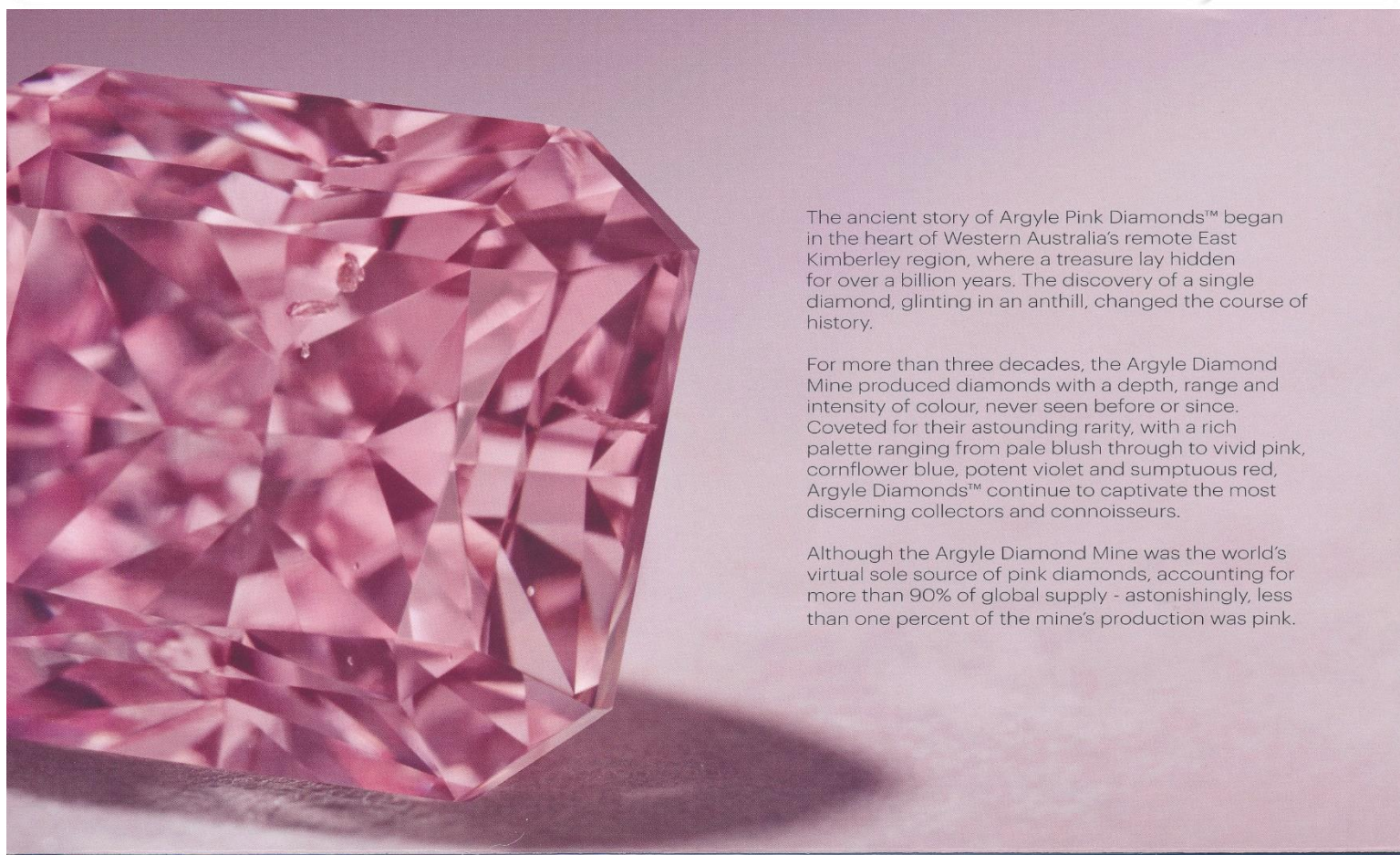
ID No.	67135
Carat Weight	0.47ct
Shape	Radiant
Clarity	P1
Colour	pRed
Date	16 December 2022

PROVENANCE: This diamond was originally purchased as Lot 5 from the 2012 Argyle Pink Diamonds Signature Tender and subsequently repolished to achieve the Argyle Pink Diamonds grade indicated on this certificate.

The diamonds are uniquely identified in a Rio Tinto Diamonds database, and are traced from source within a chain of custody process developed and monitored by Rio Tinto's independent auditors.



THIS DOCUMENT IS NOT A GUARANTEE OR VALUATION. IT DESCRIBES THE IDENTIFYING CHARACTERISTICS OF YOUR DIAMOND UTILISING THE GRADING TECHNIQUES AND EQUIPMENT AVAILABLE TO ARGYLE DIAMONDS AT THE TIME OF ITS ASSESSMENT. **ARGYLE DIAMONDS LIMITED**, LEVEL 18, 152-158 ST GEORGES TERRACE, PERTH 6000, WESTERN AUSTRALIA.



The ancient story of Argyle Pink Diamonds™ began in the heart of Western Australia's remote East Kimberley region, where a treasure lay hidden for over a billion years. The discovery of a single diamond, glinting in an anthill, changed the course of history.

For more than three decades, the Argyle Diamond Mine produced diamonds with a depth, range and intensity of colour, never seen before or since. Coveted for their astounding rarity, with a rich palette ranging from pale blush through to vivid pink, cornflower blue, potent violet and sumptuous red, Argyle Diamonds™ continue to captivate the most discerning collectors and connoisseurs.

Although the Argyle Diamond Mine was the world's virtual sole source of pink diamonds, accounting for more than 90% of global supply - astonishingly, less than one percent of the mine's production was pink.